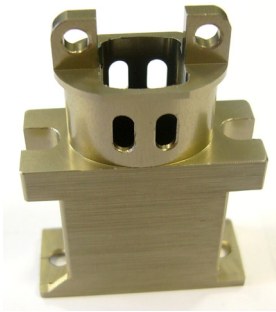


ACD/BAC/004

Backshell for CON/KAD/003/CP



Overview

The ACD/BAC/004 is an electroless nickel-plated, aluminum backshell for use with CON/KAD/003/CP mating connectors.

The part is supplied with two 4-40 UNC, stainless steel mating screws (ACD/SCW/004), two stainless steel retaining clips (ACD/CLP/003), and clamp bars with Allen head screws.

Key Features

- For use with CON/KAD/003/CP

Applications

- Use with CON/KAD/003/CP cables and mating connector

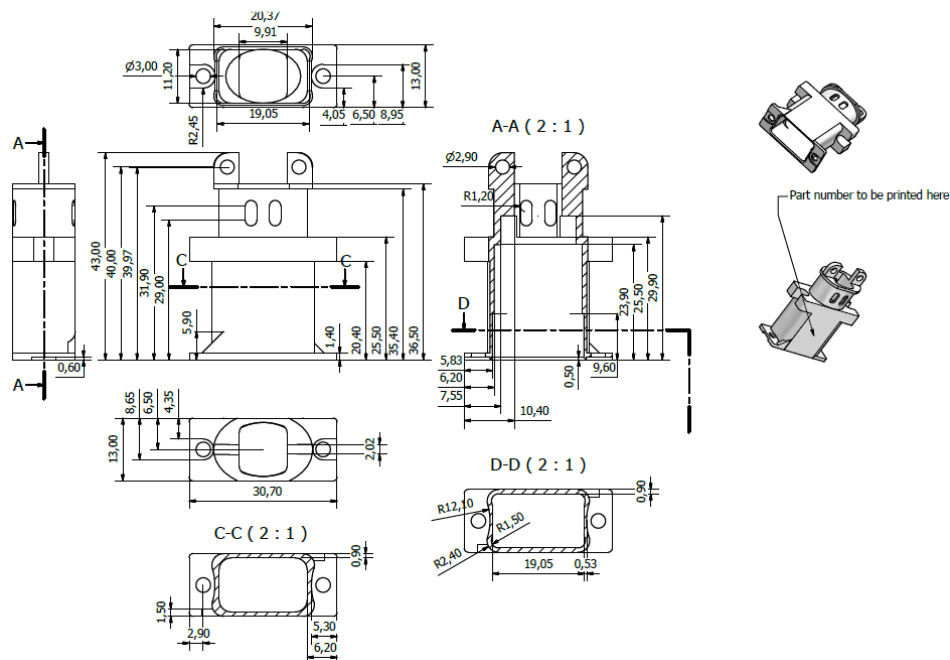


Figure 1: ACD/BAC/004 mechanical drawing (measurements in millimeters)

Specifications

TABLE 1		Mechanical specifications				
PARAMETER	MIN.	TYP.	MAX.	UNITS	CONDITION/DETAILS	
Mass						
backshell, screw and clip	–	15	–	g		
backshell, screw and clip	–	0.52	–	oz	Design metric is grams.	
Height above chassis						
	–	48.4	–	mm	For chassis clearance including bend radius, see Figure 2 on page 4.	
	–	1.9	–	in.		
Dimensions						
					Design metric is millimeters.	
backshell height	–	43	–	mm		
backshell height	–	1.69	–	in.		
backshell length	–	30.7	–	mm		
backshell length	–	1.2	–	in.		
backshell width	–	13	–	mm		
backshell width	–	0.51	–	in.		
screw length	–	3.51	–	mm	Length of threaded insert.	
screw length	–	0.13	–	in.	Length of threaded insert.	
width of clip	–	6.35	–	mm		
width of clip	–	0.24	–	in.		
Environmental ratings						
operating temperature	-40	–	85	°C	Chassis base/side plate temperature.	
storage temperature	-55	–	125	°C		
Finish						
backshell	–	–	–	–	Electroless nickel-plated aluminium.	
screw	–	–	–	–	Stainless steel.	
clip	–	–	–	–	Stainless steel.	

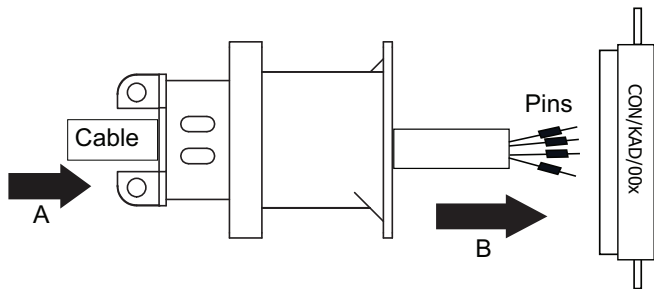
Getting the most from the ACD/BAC/004

The ACD/BAC/004 backshell is for use only with CON/KAD/003/CP mating connectors.

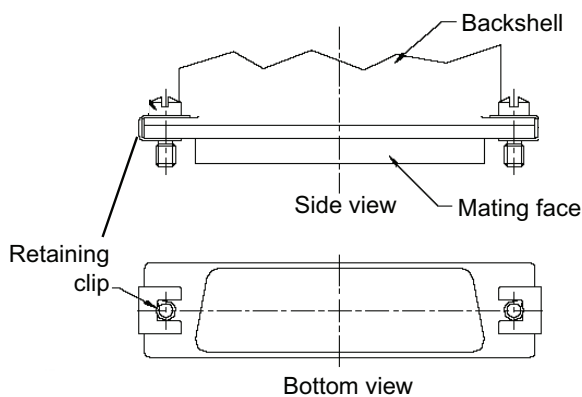
When fitting the ACD/BAC/004, the cable (wires and pins) must be inserted through the backshell before the pins are inserted into the mating connector.

Connector assembly

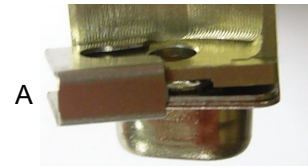
1. Remove the screws and retaining clips from the CON/KAD/003/CP connector to which the backshell is to be attached. (These can be discarded as the screws and clips provided with the backshell are used for the connector assembly.)
2. Insert the cable to be inserted into the CON/KAD/003/CP connector through the backshell (A).



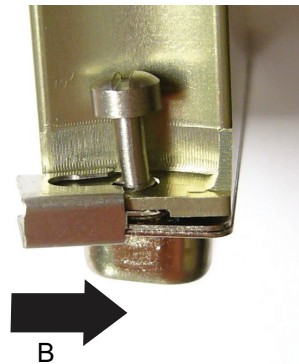
3. Insert the crimped pins into the CON/KAD/003/CP connector (B). (See the respective CON/KAD/003/CP and KIT/001 data sheets in the *Acra KAM-500 Databook* for instructions on how to insert these pins.)
4. Join the backshell and the CON/KAD/003/CP connector.
5. To fit a retaining clip (ACD/CLP/003), ensure the correct side is located on the mating face side of the assembly as shown here.



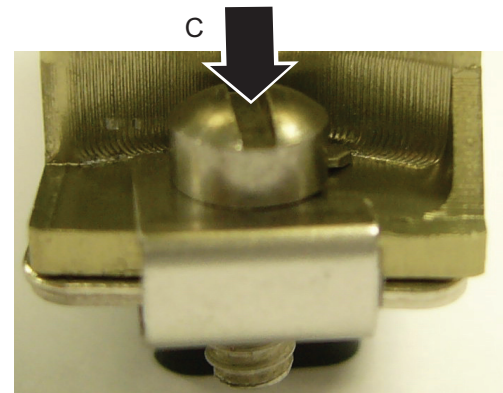
6. Position the retaining clip over the edge of the side flange (A).



7. Insert a screw (ACD/SCW/004) into the hole on the flange so that the threaded part of the screw is inside the hole and then slide the clip across so that it locks around the screw (B).



8. Now push the screw down so it is fully inserted into the retaining clip (C). (When securing the connector assembly to a module, note the recommended tightening torque is 0.4Nm.)



9. Repeat steps 5 to 8 for the other retaining clip.
10. Secure the cable with the clamp bar.
Note: Do not exceed tightening torque of 0.4Nm.

NOTE: We recommend always using a nut-locking solution on the clamp bar assembly screws.

Bend radius

The following diagram shows an example of the clearance needed when using the ACD/BAC/004 with a CON/KAD/003/CP mating connector.

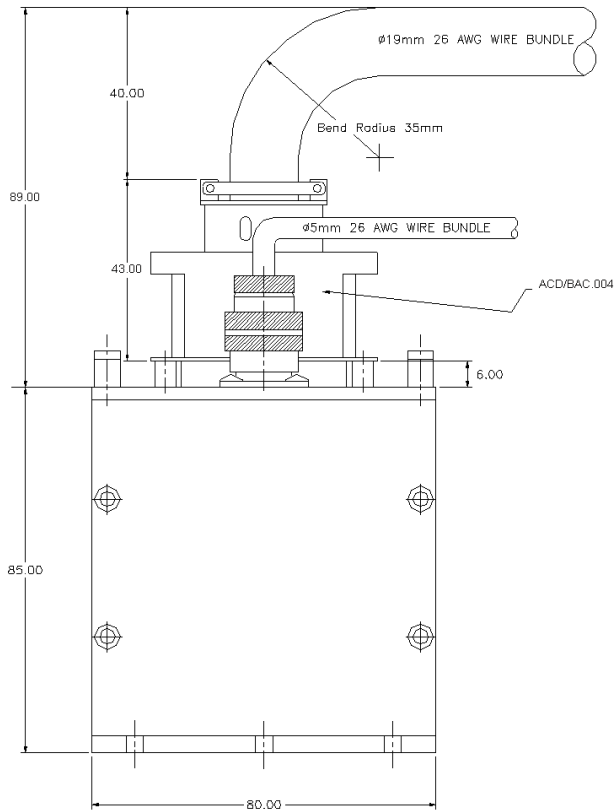


Figure 2: ACD/BAC/004 bend radius

Ordering information

PART NUMBER	DESCRIPTION
ACD/BAC/004/B	Backshell for CON/KAD/003/CP

Revision history

REVISION	DIFFERENCES	STATUS
ACD/BAC/004/B	Reinforced mounting clips; Allen head clamp bar screws	Recommended for new programs
ACD/BAC/004	First release	Not recommended for new programs

Related products

PRODUCT	DETAILS
CON/KAD/003/CP	Mating connector for KAM/TCG/102 and KAM/TCG/103 (DD, 19-way)

Related documentation

DOCUMENT	DETAILS
DOC/DBK/001	Acra KAM-500 Databook
DOC/GBK/002	Environmental Qualification Handbook
DOC/MAN/018	KSM-500 Databook

This page is intentionally blank