

## Overview

TTCWare is a data acquisition system configuration and programming application. Using TTCWare, you can customize the behavior of your hardware and create parameters to sample data. Parameters can be inserted into the PCM format at user specified locations in order to achieve desired sampling rates. After creating a PCM format, you can program your hardware with your customized configuration.

TTCWare includes several support utilities to aide you in configuring your hardware. The quick look data display and the strip chart allow you to view real-time data over RS-232. The system inventory allows you to perform a system audit. To facilitate rapid creation and maintenance of large projects, TTCWare includes an XML importer and exporter. TTCWare can also generate detailed reports on the system configuration.

### Key Features

- Supports system configuration via a standard Windows graphical interface
- Highly flexible and easy to use
- Robust project management
- Allows PCM format definition via a graphical interface
- Includes PCM format optimizing compiler
- Supports system programming and verification over RS-232
- Supports XML import and export of project configurations
- Supports IRIG-106-06 Chapter 9 TMATS export
- Generates detailed reports on all aspects of the system configuration in text, CSV and HTML formats
- Fully integrated with the TTC software suite

### Applications

- Data acquisition system setup
- System programming and verification
- RS-232 Quick-look

- Compatible with all standard TTC data acquisition systems including:
  - + CDAU-20XX/EDAU-20XX/WDAU-20XX
  - + MCDAU-2000/MEDAU-2000/MWDAU-2000
  - + MnDAU-2000
  - + AIC-2004 & CDAU-2020
  - + AIM-200X/HS-AVDAU-200X
  - + MUX-300X
- Includes several built-in utilities:
  - + RS-232 Quick-look display
  - + RS-232 Strip chart display
  - + Analog sensor calibration
  - + System inventory
  - + Terminal

# Specifications

## Minimum System Requirements

- 32-Bit: Windows 7, Windows 8/8.1, or Windows 10
- 64-Bit: Windows 7, Windows 8/8.1, or Windows 10
- Intel Core i3/i5/i7/i9 CPU or compatible
- 512 MB RAM
- VGA Monitor at 1024x768 or higher resolution

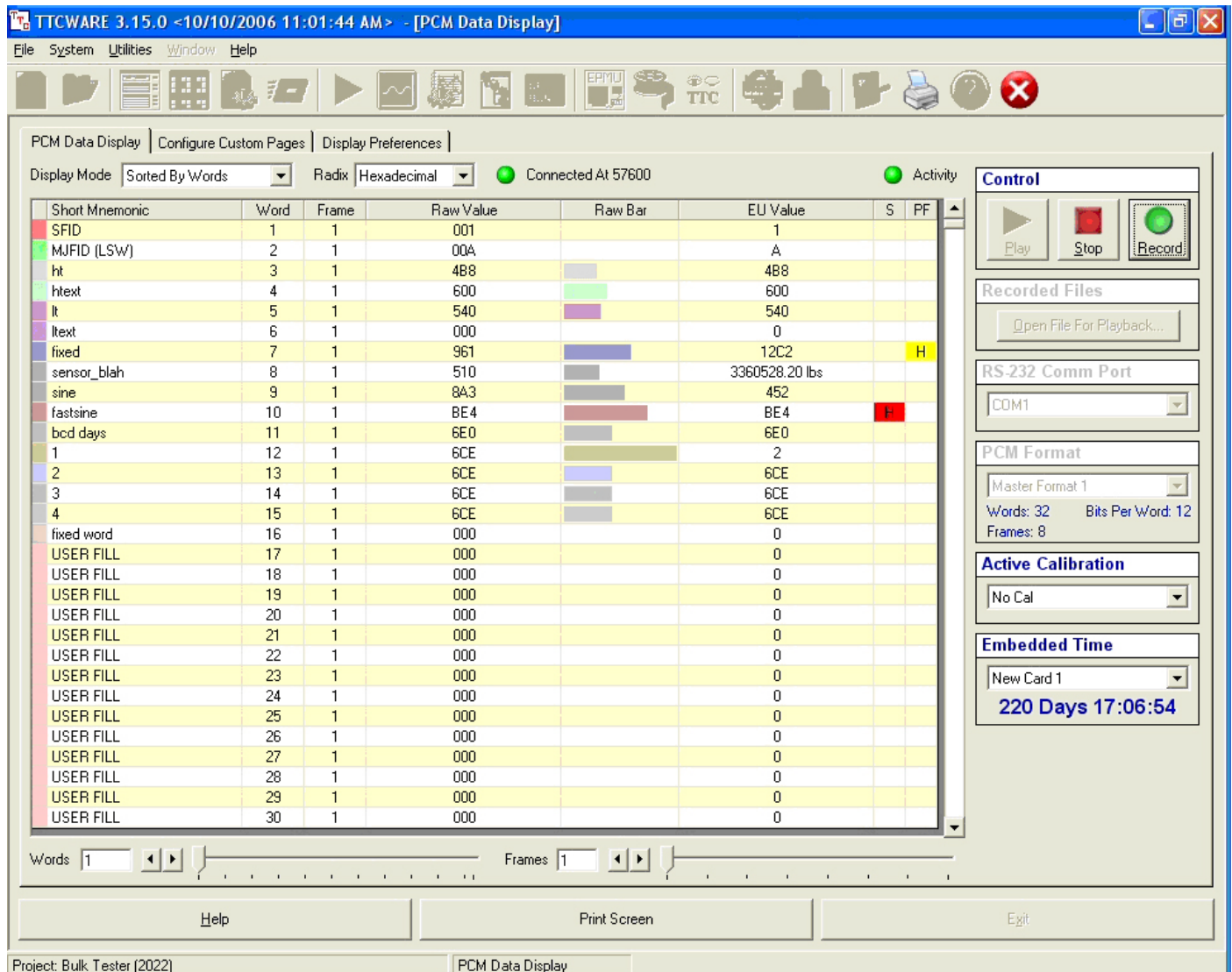


Figure 1: TTCWare Screenshot

## Ordering Information

Contact [Curtiss-Wright](http://Curtiss-Wright.com) for ordering information