

DTU-2000-1

Data Transfer Unit for Removable Memory Cartridges

**CURTISS-
WRIGHT**

CURTISSWRIGHTDS.COM



Key Features

- Allows data transfer from the ADSR-4003 on an on-demand basis
- Downloads data from removable memory cartridges and transmits through a USB port
- Compatible with USB 2.0 and USB 3.0
- Bench-top unit
- Accepts any DTD-XXXX data cartridge
- USB 3.0 high-speed data download
- Universal 9 Volt AC to DC power adapter included
- Powered by AC to DC adapter or USB port (if capable)
- Front panel LED indicates power on

Applications

- Ground support
- Recorded data transfer

Overview

The DTU-2000 data transfer unit is a low-cost desktop unit used to download data from removable DTD-XXXX memory cartridges used in the ADSR-4003 Advanced Data Server and Recorder. Data recorded using the ADSR-4003 downloads to a local PC or server using the USB interface port on the DTU-2000 and the files on the DTD-XXXX are available to the Windows® operating system.

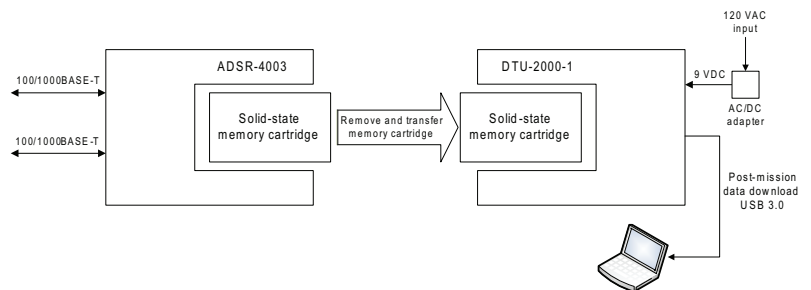


Figure 1: DMX-100 System Application

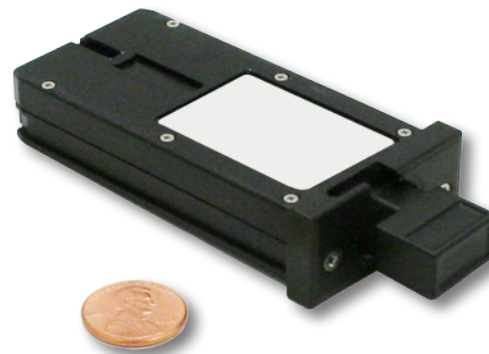


Figure 2: DTD-XXXX-1 Memory Cartridge

Specifications

Electrical

- Power consumption of DTU-2000 with DTD-XXXX installed: 2.5W, nominal
- AC/DC power supply: Voltage input: 90-264 VAC input at 47-63 Hz, for indoor office use only; Voltage output: 9V @ 1.3 Amps

Environmental

- Operating temperature: +22°, ±2°C ambient, nominal
- Storage temperature: -20° to +60°C
- Humidity: 8-90% RH, non-condensing

Dimensions and Mechanical

- Dimensions: 4.20”L x 2.10”W x 1.80”H (excluding mating connectors)
- Weight (excluding media): 11.7 oz (332 g)
- Unit connectors:
 - + Power jack, 2.1 mm
 - + Vertical USB connector

DTU-2000 Overview

- Record capacity: Based on the capacity of the storage cartridge. Sizes range up to 128 GB
- Status: Front panel LED indicates power on

Differential Outputs

- Function: Provides differential composite bit clock, data, frame clock and word clock outputs for diagnostic purposes
- Data rate: Provides rates up to 20 Mbps
- Levels: RS-422 differential TTL compatible
- Data format: NRZ-L

DTD-XXXX Memory Cartridge

- Configuration: Removable cartridge using solid-state media
- Download method: Data is recovered from the DTD-XXXX using the USB interface on the DTU-2000

Ordering Information

- DTU-2000-1: Data Transfer Unit
- DTD-XXXX: Memory Cartridge (XXXX = capacity in GB)