

## PacStar 442 Small Switch Module

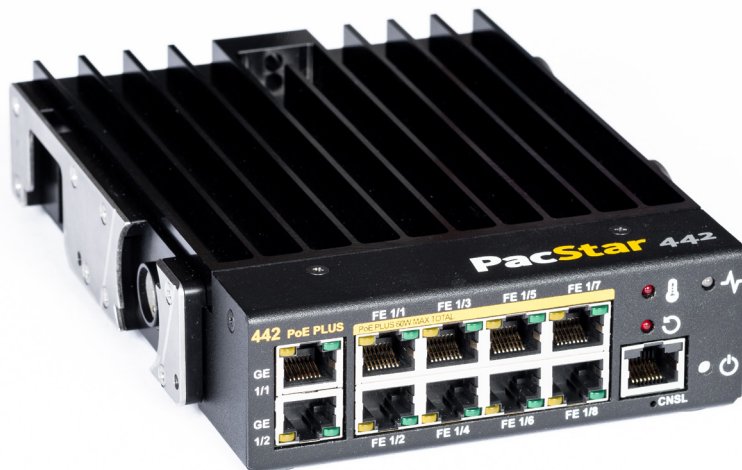
**PacStar 442 provides high-density network access ports for critical voice, data, and video connectivity in a compact, quick setup, rugged form factor using advanced Cisco<sup>®</sup> switching technology with up to 10 ports of LAN access**

Designed from the ground up to provide flexible transport, configuration and setup options, PacStar 442 can be used as follows:

- As a standalone switch module
- In snap-together configurations with other PacStar 400-Series modules including switches, servers, and gateways
- As part of modular, flexible systems with other PacStar 400-Series modules, mounted in a variety of cases and packaging solutions

PacStar 442 is designed to serve the tactical communication needs of teams that deploy worldwide and have secure communication requirements in austere environments. PacStar 442 enables teams from U.S. DoD, Homeland Security, first responders and civilian organizations to easily connect multiple devices to key communications networks.

The module integrates seamlessly with other PacStar 400-Series standard small form factor modules, providing the best in small size, flexible power, and environmental ruggedness. PacStar also offers a wide array of system packaging options for PacStar 400-Series, including briefcase, transit case, rack mount, vehicle mount, and backpack transport options.



**PacStar 442 with PoE+**

*PacStar 442 is listed on the Joint Interoperability Test Command (JITC) Approved Products List (APL) as an Assured Services Local Area Network Access Switch*

## Key Features

- **Based on Cisco ESS 2020 switching module** with 10 ports
- **Integrated smart power supply** that runs on tactical radio batteries, wide range DC input and worldwide AC input
- **PoE or PoE+ output models available**
- **Compact, snap-together design enables quick expansion** with other PacStar 400-Series modules
- **KG-250X/XS compatible power output port**
- **Extended temperature range and fanless design** improves reliability and uptime
- **Optionally managed by IQ-Core<sup>®</sup> Software** for easy setup and configuration
- **Continuous runtime with hot-swappable batteries**
- **Small, but powerful;** only 5.3" x 7.0" x 1.6" and 2.5 lbs.

## Networking Capabilities

- (10) Ethernet ports total
- Layer 2 switching - IEEE 802.1, 802.3 standard, VTPv2, NTP, UDLD, CDP, LLDP, unicast MAC filter, Flex Link, REP, VTPv3, EtherChannel, voice VLAN
- Security - SCP, SSHv2, SNMPv3, TACACS+, RADIUS server/client, MAC address notification, BPDU Guard, SPAN session, port security, DHCP snooping, dynamic ARP inspection, IP Source Guard, 802.1x, guest VLAN, MAC authentication bypass, 802.1x multi-domain authentication, storm control, trust boundary
- Multicast - IGMPv1, v2, v3 snooping, IGMP filtering, IGMP querier
- Management - Web Device Manager, MIB, Smartport, SNMP, syslog
- Quality of Service - ingress policing, rate limit, egress queuing/shaping, AutoQoS
- IPv6 host support, HTTP over IPv6, SNMP over IPv6
- IPv4 static routing

## Connectors

- (10) Ports Total:
  - (4) RJ45 (10/100 Base-T Ethernet)
  - (4) RJ45 (10/100 Base-T Ethernet with PacStar PoE)
  - (2) RJ45 (10/100/1000 Base-T Ethernet)
- (1) RS-232 console port
- Wide range DC input
- 12V DC output connector, KG-250X/XS compatible
- Radio battery and PacStar 400-Series power snap-together connector

## Specifications

- Dimensions 5.3" x 7.0" x 1.6"
- Weight 2.5 lbs.
- Snap-together connector provides DC pass-through for powering additional PacStar 400-Series modules. Under most conditions, three modules can be snapped together (contact PacStar for details)
- Fanless design for quiet operation, high reliability and low power draw
- Operational temperature -20C to 70C
- Tested to MIL-STD 810 (contact PacStar for details)
- Tested to MIL-STD 461 (contact PacStar for details)

## Power Specifications

- Battery snap-together connectors for 1-2 each AN/PRC-152/148 snap on radio batteries; hot-swappable with up to 5+ hours runtime, depending on model, per battery
- Wide range DC input, 10-35V
  - For example, allows powering with AN/PRC-117 radio batteries with optional adaptors (not included)
- Worldwide AC power input (with adapter cable)
- Regulated clean 12V DC output, 20 watts (supports KG-250X/XS or KG-175D)
- PoE power:
  - PoE model: Up to 12 watts available PoE power on AC or DC input
  - PoE+ model: On external power input up to 50 watts available PoE+ power
- Power draw:
  - Nominal 10 watts total
  - Max PoE model (including 12 watts of PoE devices attached) 22 watts\*
  - Max PoE+ model (including 50 watts of PoE+ devices attached) 60 watts\* total

\* Reduced operational temp limit when providing maximum PoE power



PacStar 442 with PoE

PacStar products are covered by multiple patents. Additional patent(s) pending. See [www.pacstar.com/patents](http://www.pacstar.com/patents) for details.